

# Wine Industry Smoke Detectors (WISDs)

Matt Partridge




ESTD 1928  
**DeBORTOLI**  
FAMILY WINEMAKERS





4th January 2020

Check out our new geostationary layers! 



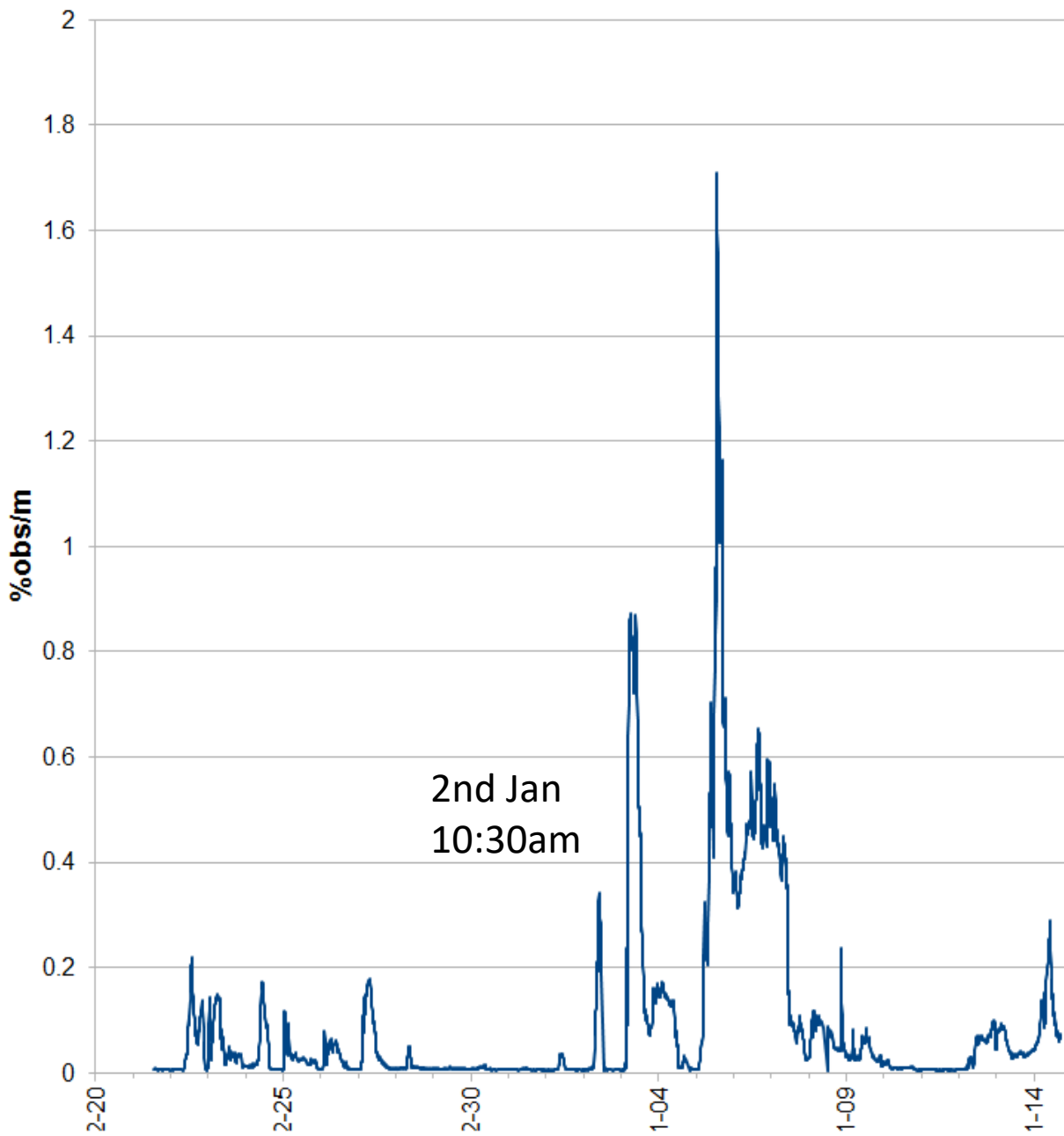
200 km  
100 mi



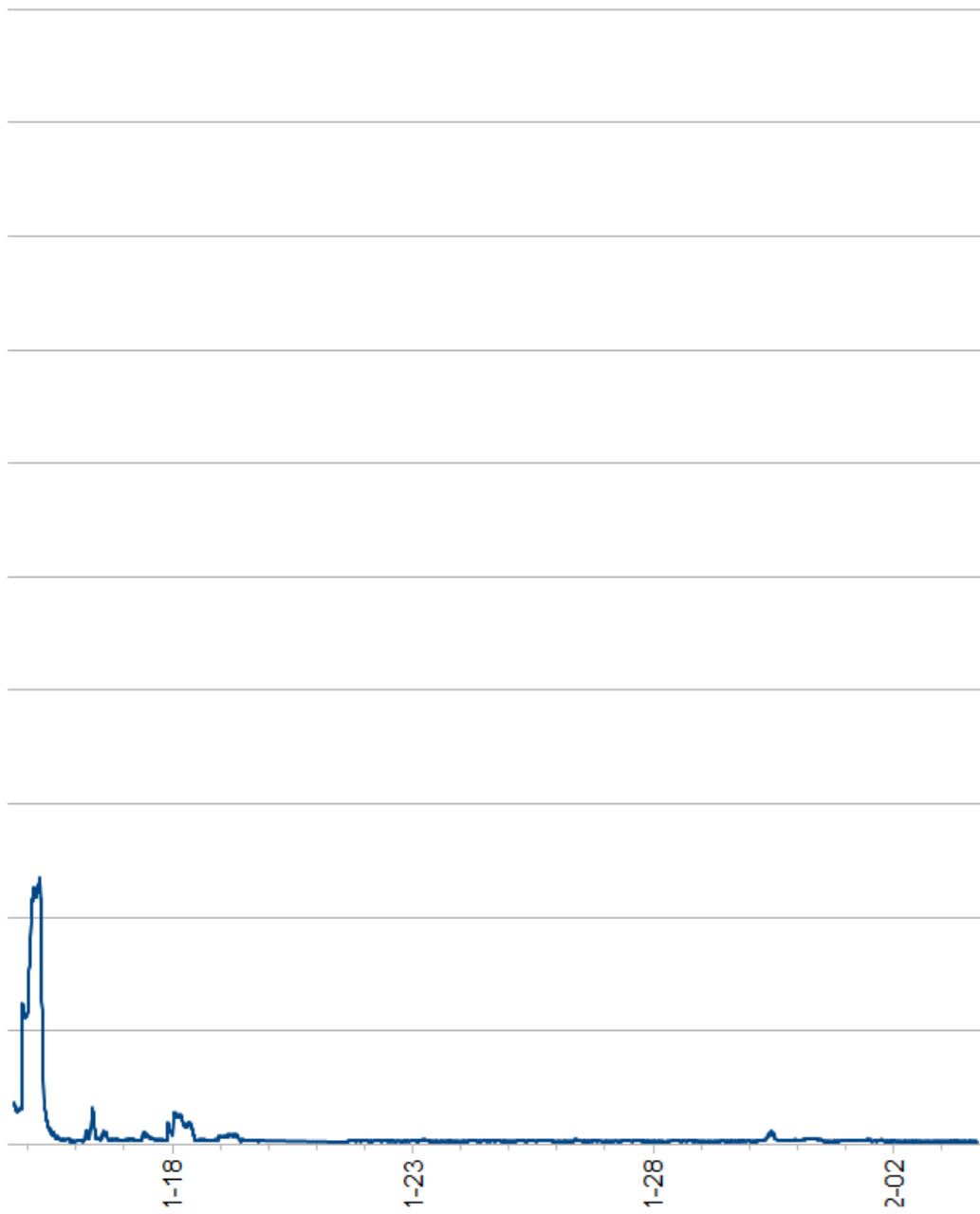


2nd January 10:30am

DB Rutherglen 2019-12-21 13:20 to 2020-01-14 16:40



DB Rutherglen 2020-01-14 16:50 to 2020-02-03 18:00



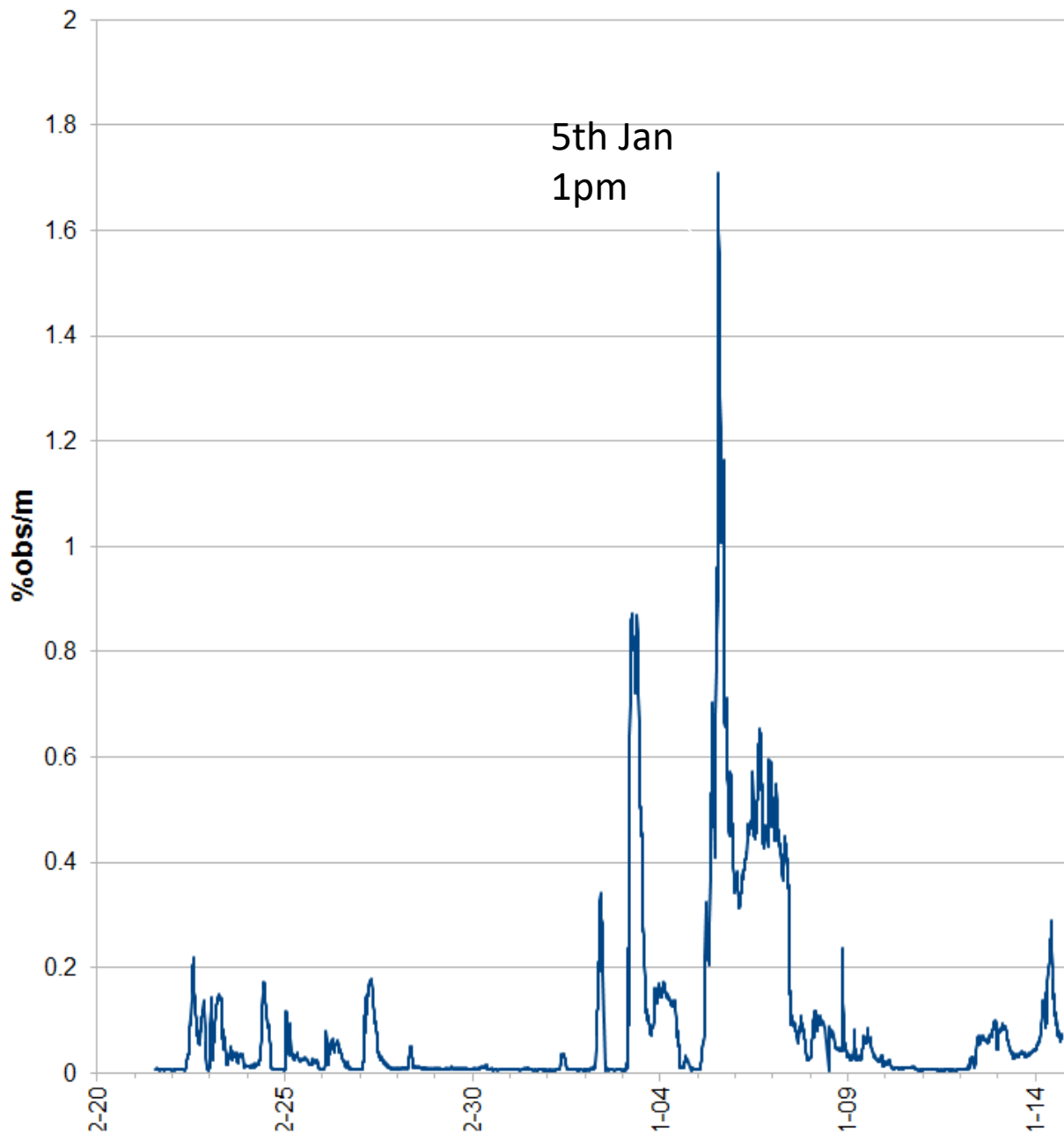


5th January 10:30am

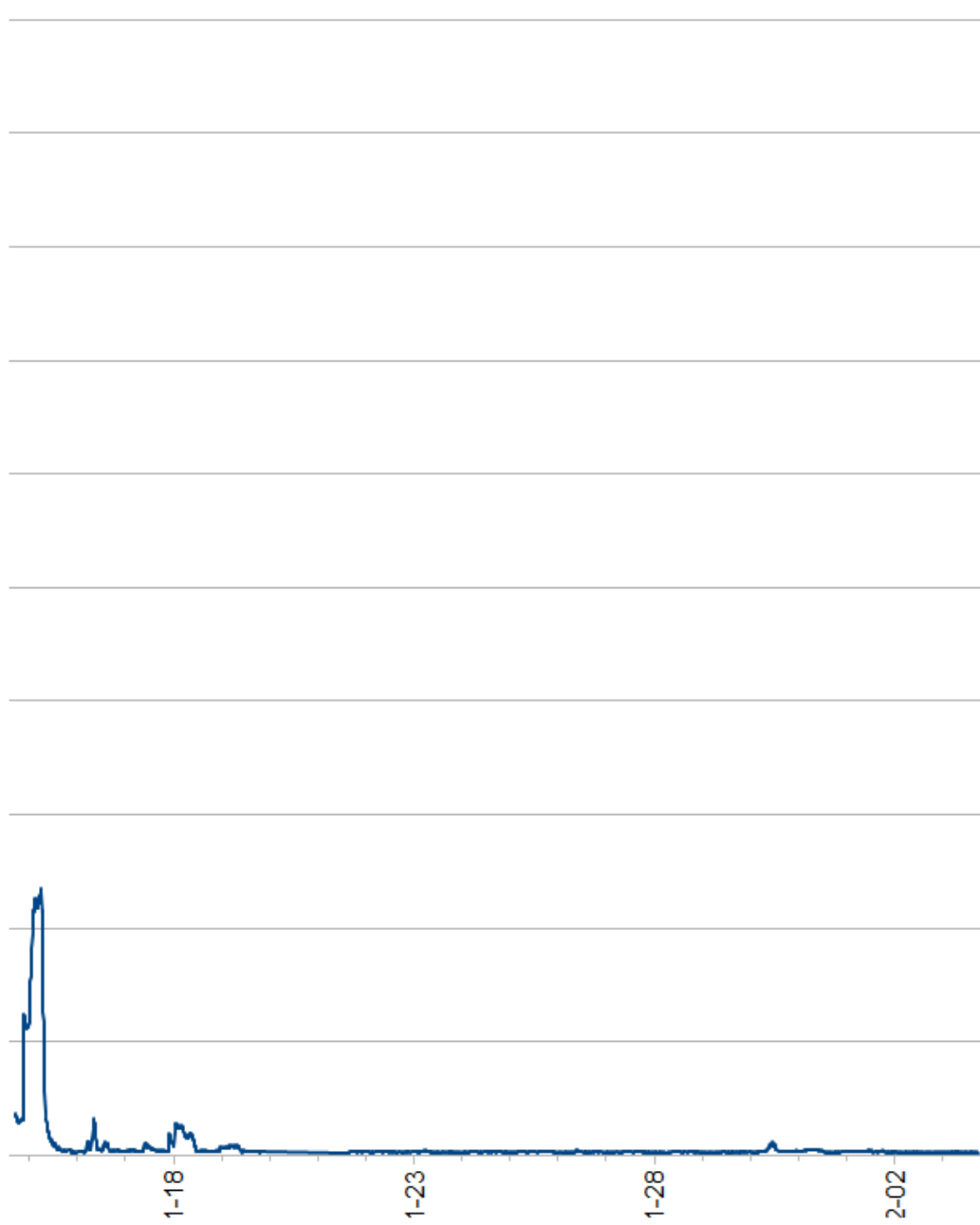


5th January 12:30am

DB Rutherglen 2019-12-21 13:20 to 2020-01-14 16:40



DB Rutherglen 2020-01-14 16:50 to 2020-02-03 18:00





Dose: White Wines, Rose  
- off skins 5-15km



Dose: White Wines, Rose  
- off skins > 15km



Dose: Red Wines - on  
skins 5-15km



Dose: Red Wines - on  
skins > 15km



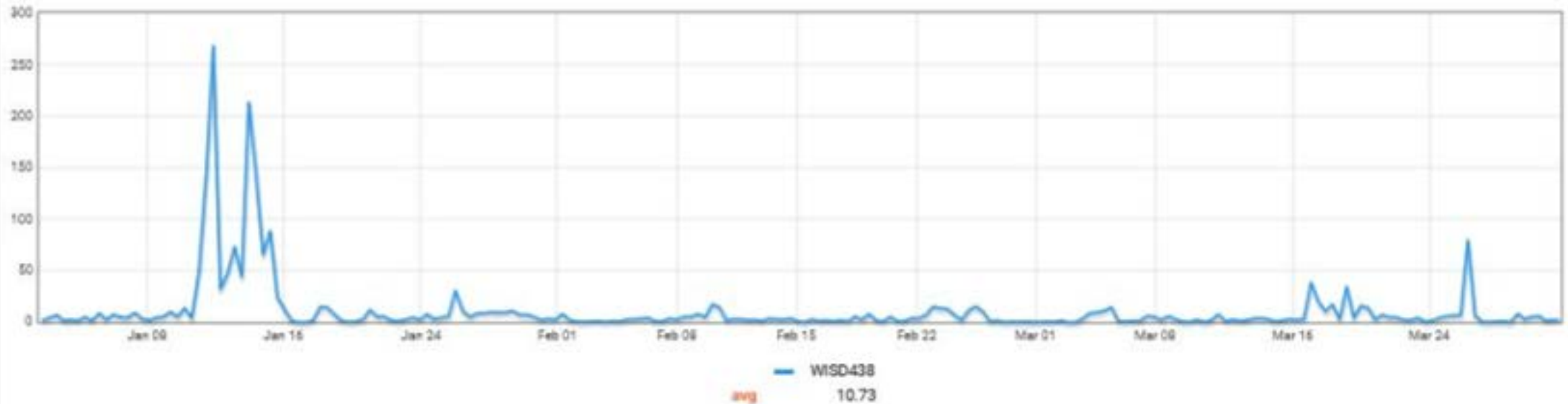
temperature

26 °C

humidity

56 %RH

PM Sensor ( $\mu\text{g}/\text{m}^3$ )



Dose: White Wines, Rose  
- off skins 5-15km



2026

Dose: White Wines, Rose  
- off skins > 15km



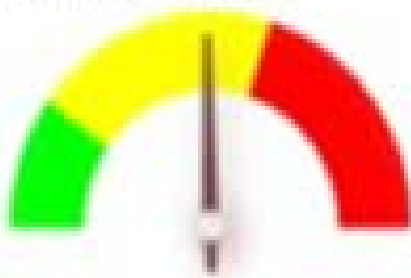
Dose: Red Wines - on  
skins 5-15km



Dose: Red Wines - on  
skins > 15km

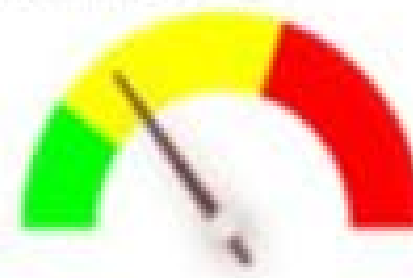


Dose: White Wines, Rose  
- off skins 5-15km

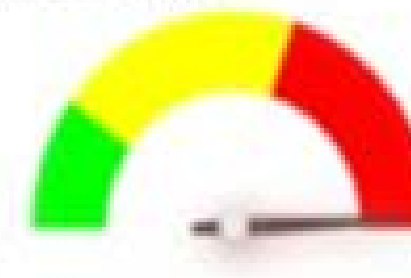


2020

Dose: White Wines, Rose  
- off skins > 15km



Dose: Red Wines - on  
skins 5-15km



Dose: Red Wines - on  
skins > 15km





# Conclusion

WISD wont stop smoke taint!

Practical tool for predicting & monitoring risk of smoke taint

Relatively inexpensive

Allows the conversation to start and be driven by data not emotion

